



**KLEIN & HEUCHAN, INC**  
**REALTORS**

Commercial/Investment/Real Estate Services

SI-1623

# INDUSTRIAL BUILDING FOR SALE



**3201 44<sup>TH</sup> AVE. N.**  
**ST. PETERSBURG, FL 33714**

- INDUSTRIAL BUILDING WITH 3 LOADING DOCKS
- 18' CLEAR HEIGHT
- 3 PHASE, 400 AMP, 240 VOLTS
- CLOSE TO INTERSTATE
- **SALE PRICE: \$2,050,000**



1744 N. Belcher Rd., Clearwater, FL 33765 ■ Telephone 727-441-1951 ■ Fax 727-449-1724

[www.kleinandheuchan.com](http://www.kleinandheuchan.com)





REVISED: 12/3/2025

## PROPERTY OVERVIEW

SI-1623

**ADDRESS:** 3201 44<sup>TH</sup> Ave. N.  
St. Petersburg, FL 33714

**LOCATION:** From 34<sup>th</sup> St., east on 44<sup>th</sup> Ave. N.,  
building is on north side of the road.

**LAND AREA:** 31,350 SF  
**DIMENSIONS:** 165' x 190'

**ZONING:** E-1 – Pinellas County  
**LAND USE:** E  
**FLOOD ZONE:** AE (Flood Insurance Required)

**IMPROVEMENTS:** 8,848 SF

**LEGAL DESCRIPTION:** Lengthy, in listing folder

**YEAR BUILT:** 1972

**UTILITIES:** Electric – (Duke Energy)  
Water, Sewer & Trash- (City of St. Petersburg)

**CLEAR CEILING HEIGHT:** 18'  
**ELECTIC SERVICE:** 3 Phase, 400 Amp, 240 volts

**PARKING:** 23 spaces

**TAXES:** \$23,635.38 (2025)  
**PARCEL ID:** 02-31-16-44118-000-0020

**PRICE:** \$2,050,000

**TERMS:** Cash

**NOTES:** Perfect opportunity to purchase industrial building. Located in Mid-Pinellas County. Three loading docks. Property is adjacent to US Highway 19 and minutes from Interstates 275, 75 and I-4.

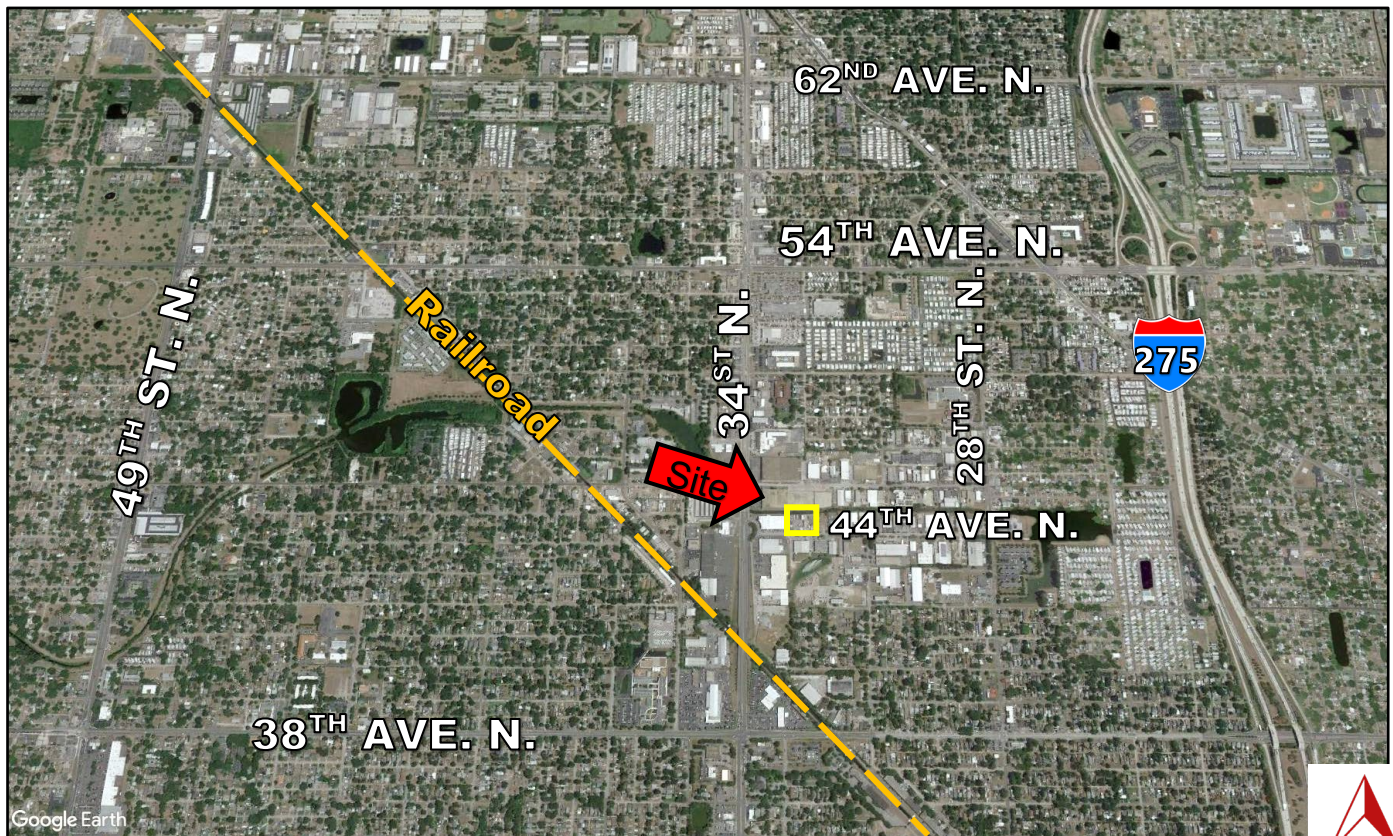
**KEY HOOK #:** Lockbox

**ASSOCIATE:** Steve Klein

**K&H SIGNAGE:** 3' X 4'

**LISTING CODE:** SI-1623-2-27

**SHOWING INFORMATION:** Call listing agent to schedule showing.



The information contained herein was gathered from sources believed reliable; however, Klein & Heuchan, Inc., or its agent, cannot be responsible for errors, omissions, changes, withdrawal, or prior sale.